

Sustainability at

BODAHL MØBLER



Responsibility at Bodahl Møbler in brief

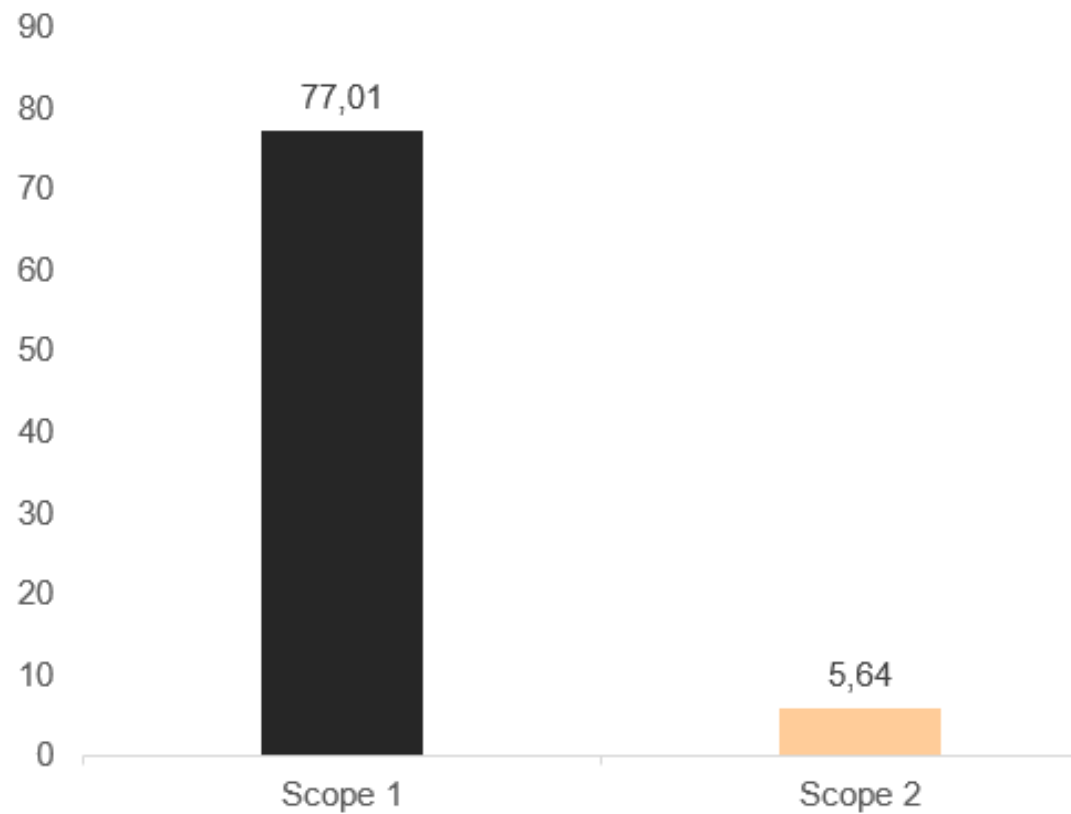
- We combine aesthetic design and superior quality with an ongoing focus on global resources and societal well-being
- Our business philosophy is anchored in delivering high-quality products while supporting environmental awareness, social responsibility and ethical business behavior.
- We have formed an ESG policy that outlines our commitment to upholding principles of environmental, social and good governance, serving as a cornerstone for responsible behavior.
- We have formed a supplier Code of Conduct that outlines the essential standards our suppliers of goods and services must uphold when engaging in business with us.
- We strive to minimize our environmental impact on our warehouse activities. Our commitment to increase reuse, recycling and waste reduction extends across all levels of our processes and products.
- All new employees at Bodahl Møbler are introduced to ESG policy, and our daily work is anchored around the principles.



Carbon footprint 2023 at Bodahl Møbler

Bodahl Møbler's total scope 1 and 2 CO₂e emissions in tonnes divided by scopes is shown in the graph on the right

Electricity is based on the environmental declaration



Environmental focus in 2024

- We will continue to look for less environmentally harmful materials for our products
- We will continue to provide repairment options for a broad variety of our products to ensure a long product lifespan – and promote giving away lightly damaged products to charity instead of discarding them
- We will consolidate our warehouse activities to promote efficient operations and minimize internal transportation of goods
- We will continue to minimize carbon emissions from transport via load optimization of trucks and containers and smarter packaging material
- We will minimize air freight of product samples to reduce carbon emissions



Social and Governance focus in 2024

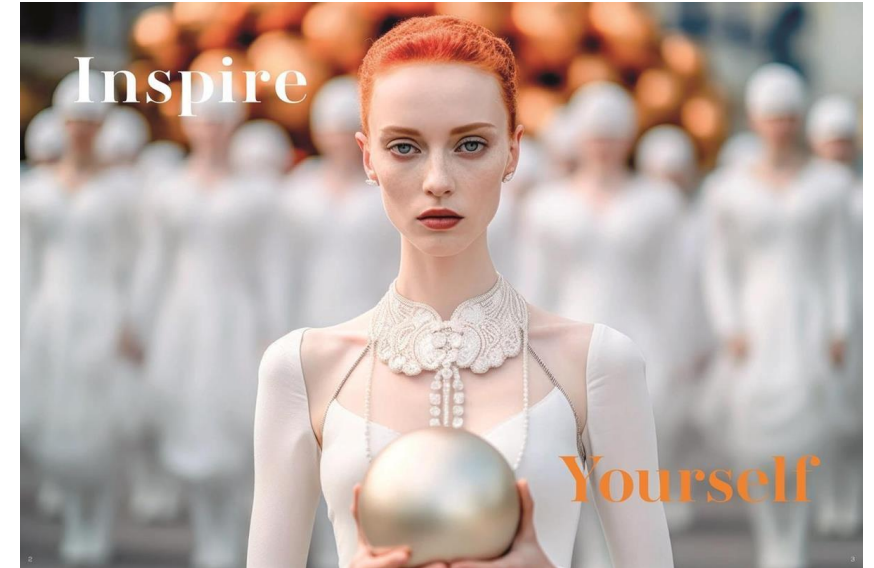


- We will introduce our new ESG Policy to all employees to ensure alignment and common understanding of ESG at Bodahl Møbler
- We will engage key suppliers in our Code of Conduct to ensure buy-in and common ground also on Social and Governance matters e.g., human and labor rights and anti-corruption
- We will continue our focus on work-life balance and a safe and healthy work environment at Bodahl Møbler and engage with external consultants on safe behavior in the workplace
- We will continue our focus on a safe and healthy work environment at our suppliers via thorough walkthroughs and dialogues when visiting supplier facilities



Historical environmental efforts

- We have changed the steel construction for chair and table legs which have led to significant savings in volume and carbon emissions when shipping items
- We have installed new and modern lighting technologies in our warehouses
- We have introduced water-based lacquer across a broad variety of products
- We use veneer and particle boards ensuring a high degree of reused wood when possible.
- We ensure proper sorting and disposal of waste from our facilities
- We maintain a comprehensive spare part program to ensure longevity of our products



Our ESG Policy and Supplier Code of Conduct

- The foundational principle of Bodahl Møblers ESG policy is strict compliance with all relevant legislation across our operational areas and every employee is expected to contribute to sustainability initiatives and uphold our ethical standards to ensure we achieve our ESG goals together
- The ESG Policy adheres to UN Global Compact guidelines and outlines our expectations on internal behavior in terms of employee and working conditions, human rights, environment and climate and anti-corruption when working at Bodahl Møbler
- Our Supplier Code of Conduct outlines the essential standards that our suppliers and sub-suppliers of goods and services must uphold when engaging in business with Bodahl Møbler
- The purpose of our Supplier Code of Conduct is to ensure common ground and mutual respect when engaging in business partnerships. It outlines our expectations in terms of collaboration with suppliers, human rights, labor practices, working conditions, environment and climate, animal welfare and anti-corruption



