

ENGLISH: CHAIRS (LEATHER)



Congratulations on the purchase of your unique piece of vintage furniture.
With the proper use and treatment, you will enjoy the purchase for many years to come.

The chair is manufactured with buffalo leather on the seat and can be delivered in the colour categories "Antique" (shiny and mat) and "Sierra"/"Kenia" leather. The full grain leather used is ideally suited for the vintage look and feel of our products. The worn distressed appearance with natural markings, such as healed scars, scratches, insect bites, neck and belly wrinkles etc. characterize a real skin and provides structure in the surface as well as attribute to the vintage look that we create in the color process. Over time, the leather will change the character and get a natural patina depending on use, light, heat etc. - The leather becomes more flexible, smooth and brighter on the parts of the chair most used.

"Antique" (shiny and mat) leather: The colour of the leather is applied by hand after the seat of the chair has been upholstered. The colour appears transparent. Due to the work process by hand, we cannot guarantee the exact same colour when reordering.

"Sierra"/"Kenia" leather: Aniline leather – the grain is dyed before upholstering the chair. The skin has a soft touch/surface and may be sensitive to stains - will soon get natural patina. We cannot guarantee the exact same colour when reordering.

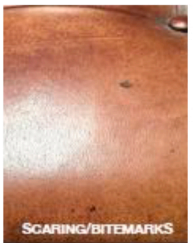
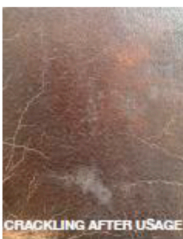
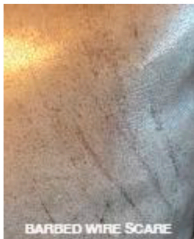
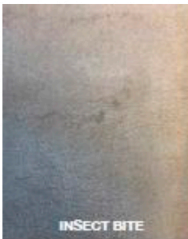
The chair comes with legs of black lacquered wood, brushed iron or black painted iron. To achieve the desired rustic/vintage look of the painted iron frame, a black transparent lacquer has been used – here the welds, the natural joints of the iron and irregularities are visible and therefore not to be justified as a claim.

We hope you will enjoy your vintage chair.

Team BODAHL



The photo illustrates the colour process by hand for "Antique" leather



Illustrates the black painted legs of iron

Materials:	Seat upholstered with buffalo leather. Legs of the chair: lacquered wood, brushed iron or black lacquered iron.
Storage:	For indoor use only. Keep the chair in constant ambient temperature. Do not expose the chair to direct UV light, as research shows, that direct UV light can cause little tears/cracks in the topcoat of the leather. The topcoat protects from external influences like moist and dirt.
Care:	For cleaning of seat and legs, please use a soft clean dry cotton cloth. Please do not use any kind of chemicals for cleaning of either seat or legs. Please avoid scratching the furniture with any kind of abrasive textile or tool, as it will damage the surface. Antique leather: Requires no care/treatment of any kind. Sierra/Kenia leather: Leather care intended for aniline leather when needed.